

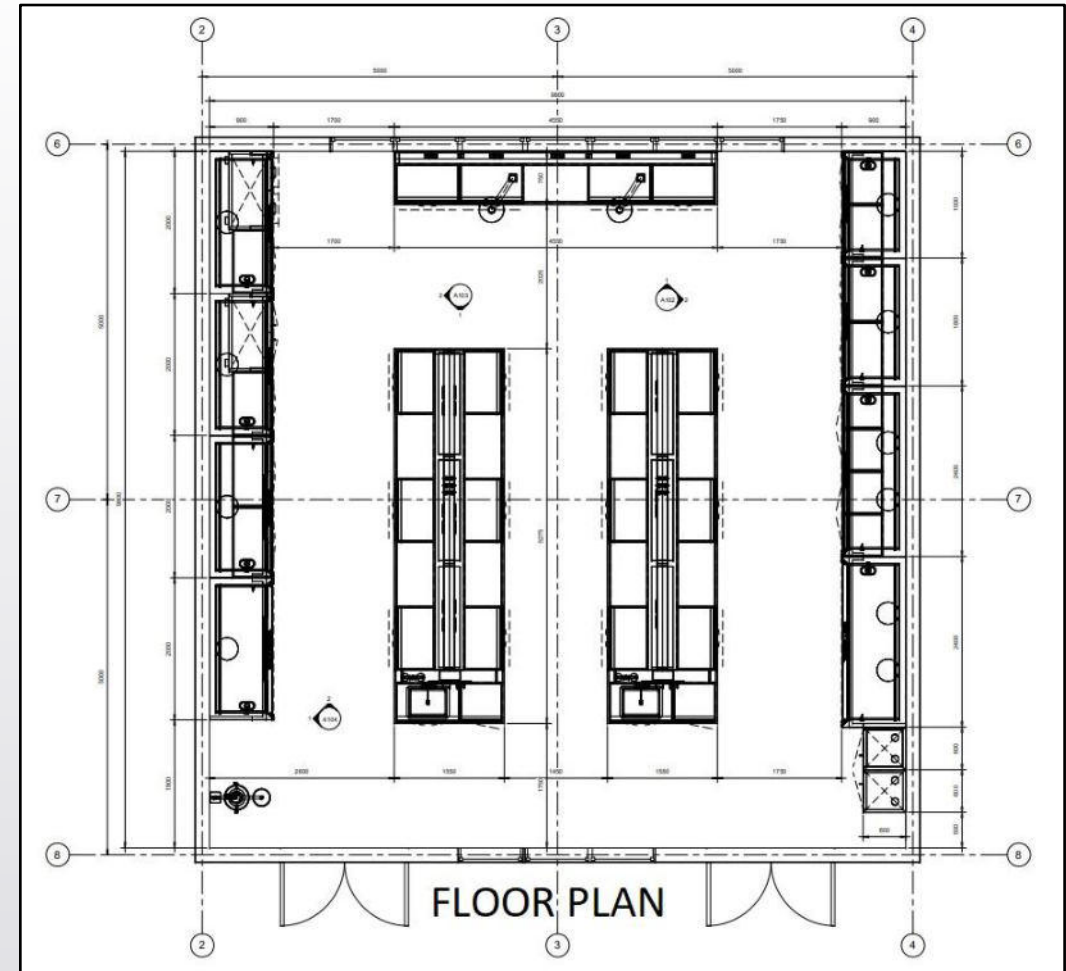
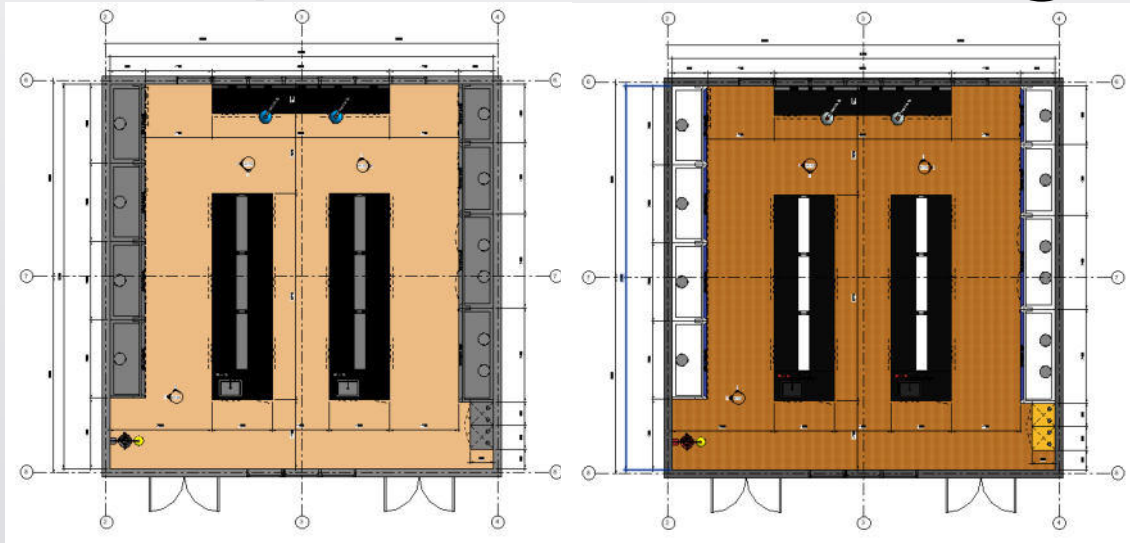


What is expectation from BIM from lab furniture industry

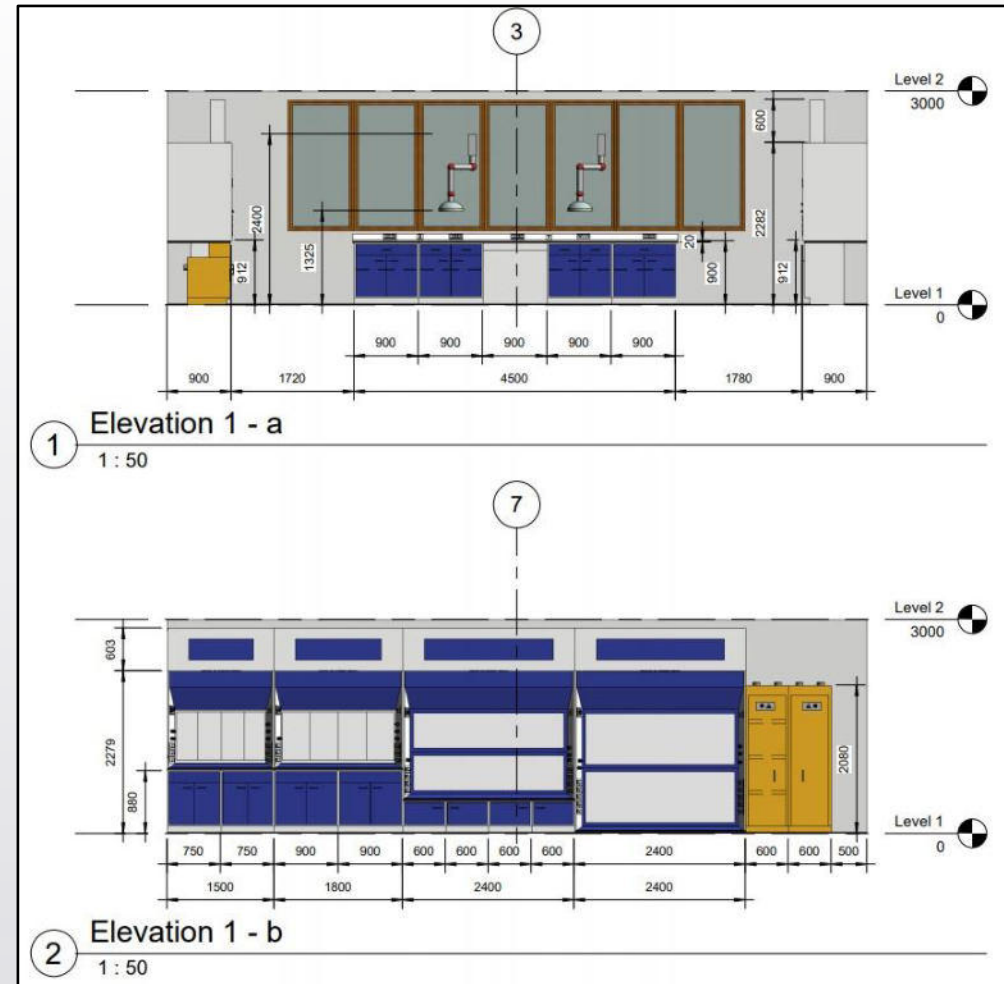
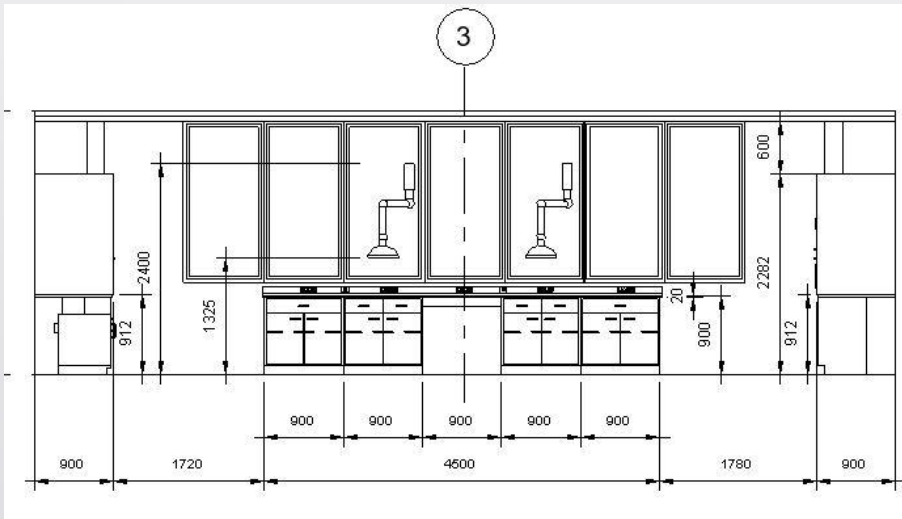
- Floor plan or Space plan
- Elevation / Front view for detailing
- Isometric Drawing for better visualisation
- Realistic Rendering to impress customer
- BOM, Costing and shipment weight and volume for analysis
- 2D Drawing for Tendering
- And last not the least Time saving (more than 50%) & Accuracy.



Floor Plan / Space Planning

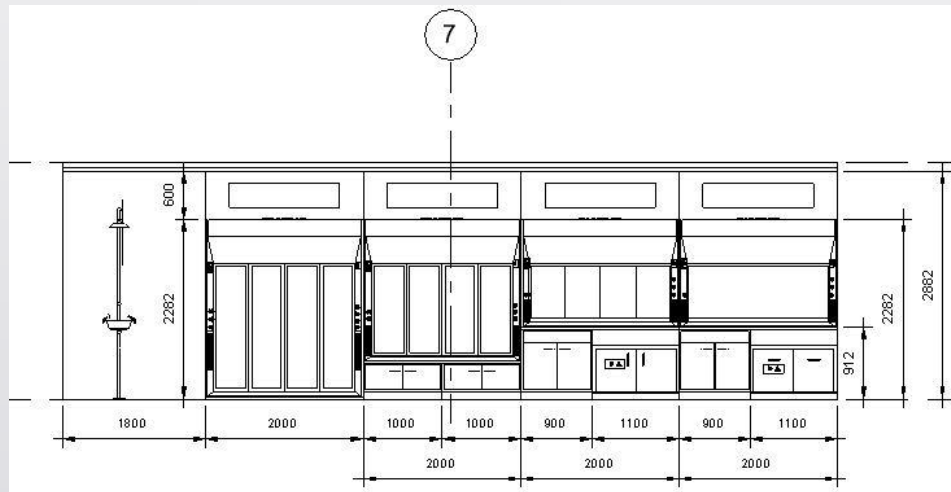


Elevation / Front view for detailing





Elevation / Front view for detailing



① Elevation 2 - a
1 : 50

② Elevation 2 - b
1 : 50



Isometric Drawing for better visualization





Isometric Drawing for better visualization





Realistic Rendering to impress customer





Realistic Rendering to impress customer





BOM, Costing and shipment weight and volume for analysis

<Furniture System Schedule>							
A	B	C	D	E	F	G	H
LAB:	TBL:	Model	Description	Cost	Count	WtLength	ERLength
		345P020.200	CUPSINK OVAL PP MOLDED - L200XD100XH250	2000.00	8		
LAB-1		110M060.101	PEDESTAL BASE UNIT 1DR 1AS - L600XD550XH880	22000.00	2		
LAB-1	FH-1	110M075.201	PEDESTAL BASE UNIT 2DR SINK - L750XD550XH880	21000.00	2		
LAB-1		110M090.201	PEDESTAL BASE UNIT 2DR SINK - L900XD550XH880	23000.00	6		
LAB-1		110M090.210	PEDESTAL BASE UNIT 2DR 1DWR 1AS - L900XD550XH880	27000.00	14		
LAB-1	WB-1	110M090.220	PEDESTAL BASE UNIT 2DR 2DWR 1AS - L900XD550XH880	28000.00	2		
LAB-1		115M090.000	KNEE SPACE UNIT - L900XD550XH880	9000.00	9		
LAB-1		116M017.100	FILLER PANEL WALL TABLE - L175XD50XH900	2000.00	6		
LAB-1		116M045.200	FILLER PANEL FRONT w/TOE SPACE - L450XD50XH900	3000.00	4		
LAB-1	FH-3	197M060.100	BASE UNIT FOR LOW HT FH 1DR - L600XD550X450	0.00	4		
LAB-1	FH-6	197M100.200	BASE UNIT FOR LOW HT FH 2DR - L1000XD550X450	0.00	2		
LAB-1		340P060.300	PP MOULDED SINK w/TRAP - L600XD450XH300	5500.00	2		
LAB-1		350M150.130	REAGENT SHELVES 2 TIER 150*300 - L1500XD300XH1500	28000.00	2		
LAB-1		350M150.133	REAGENT SHELVES 3 TIER 150*300*300 - L1500XD300XH	0.00	2		
LAB-1		350M150.330	REAGENT SHELVES 2 TIER 300*300 - L1500XD300XH1500	33000.00	2		
LAB-1		360P060.200	PEG BOARD MOC PP 27PEGS - L600XH600	15000.00	2		
LAB-1		370G075.100	SPLASH SCREEN TOUGHENED GLASS L750X18XH600	4000.00	4		
LAB-1		382M150.101	BENCH MNTD NEEDLE VALVE 2WAY - NITROGEN	0.00	2		
LAB-1		382M150.102	BENCH MNTD NEEDLE VALVE 2WAY - COMP. AIR	0.00	2		
LAB-1		382M150.103	BENCH MNTD NEEDLE VALVE 2WAY - VACUUM LOW	0.00	2		
LAB-1		385M200.200	BENCH MNTD TAP SWIVEL TYPE 2WAY - HOT/COLD MIXER	8000.00	2		
LAB-1		390M030.100	SERVICE PENDENT 1DR - L300XD150XH2400	15000.00	2		



Other features

- Total Electrical Load
- Worktop Drawings
- Floor Load
- BOM Sorting Floor, Lab & table wise
- Assembly / Subassembly BOM